



Inspiring Excellence

Upper Merion Area School District

435 Crossfield Road • King of Prussia, PA 19406 • 610-205-6400 • Fax 610-205-6433 • www.umasd.org

September 4, 2019

Dear K – 12th Grade Parent/Guardian/Caregiver,

We are excited about embracing maker learning throughout our elementary classrooms as we integrate more opportunities to have experiences in Science, Technology, Engineering, and Mathematics (STEM).

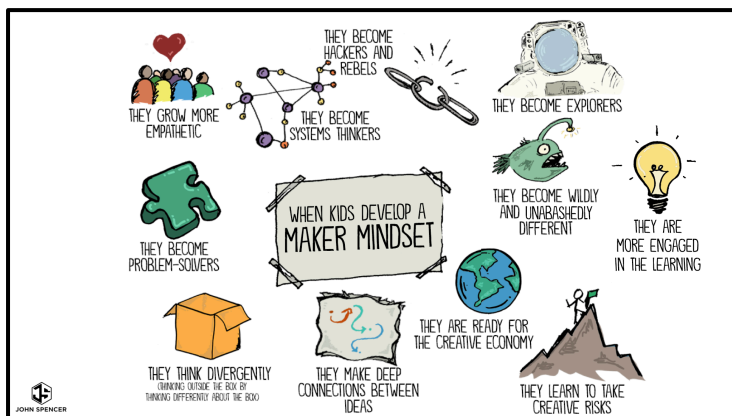
What is maker learning?

- Makers are tinkerers, DIYers, technologists, students, inventors, hackers, artisans, and designers who use tools and materials to create. ([Remake Learning](#))
- Hands-on, creative, and design-centered learning. ([Digital Promise](#))
- The shift to "making" represents the perfect storm of new technological materials, expanded opportunities, learning through firsthand experience, and the basic human impulse to create. ([What's the Maker Movement](#))
- It is an approach that positions agency and student interest at the center, asking students to become more aware of the design of the world around them, and begin to see themselves as people who can tinker, hack and improve that design. ([Maker Ed](#))

Maker learning can take many forms including using recycled products to create, learning to code robots to start experiencing computer science, collaboration between students to come up with a novel solutions, critical thinking to explore different solutions to a variety of problems, and tapping into a student's creativity to tackle problems by coming up with innovative solutions.

As a school district we are providing many of the materials and equipment needed in our classrooms. Our teachers may reach out to you to help with the recycled and additional materials that may be around your house. As you are aware, we need to be aware of possible cross contamination of products that may have come in contact with food or materials that would produce an allergic reaction for our students. To help navigate what would be acceptable to send in to our schools we have created a table (page 2) that classifies products as low risk, medium risk, and high risk that students will come into contact with during a project. Please reference this table when sending in recycled materials. If a product is not on the list, please feel free to reach out to me directly to determine if the product is acceptable.

Thank you for your continued support of our students. We are looking forward to our students having incredible STEM experiences in our classrooms!



([John Spencer, Makerspace](#))

Sincerely,

Dr. Sean W. Gardiner
Director of STEM Education
610.205.6422
sgardiner@umasd.org



Inspiring Excellence

Upper Merion Area School District

435 Crossfield Road • King of Prussia, PA 19406 • 610-205-6400 • Fax 610-205-6433 • www.umasd.org

UMASD RECYCLED MATERIALS LIST

LOW RISK NEW AND RECYCLED PRODUCTS

LOW RISK

(YES—Can send in these items)

- | | | | |
|------------------------|----------------------|---------------------|-------------------------|
| • Action Figures | • Fabric | • Nuts or bolts | • String |
| • Alligator clips | • Fake | • Packing Peanuts | • Styrofoam Items |
| • Beads | • Flowers/Greens | • Paper Clips | • Tissue Paper |
| • Blocks | • Feathers | • Paper Towel Rolls | • Colored |
| • Bubble Wrap | • Felt | • Ping Pong Balls | • Tissue Boxes |
| • Buttons | • Floppy Disks | • PVC Pipes | • (Empty) |
| • Cardboard boxes | • Gears | • Rulers | • Toys (can take apart) |
| • (Not previously | • Hole Punchers | • Sequins | • Twisty Ties |
| • containing any food, | • Hot Wheels | • Shoe Boxes | • Toilet Paper Rolls |
| • e.g., Amazon) | • K'Nex | • Small Animal | • Twine |
| • Cardstock Paper | • Legos | • Figures | • Unifix Cubes |
| • CDs & DVDs | • LED Lights | • Spools | • Velcro |
| • Clothes Pins | • Magnets | • Staplers/Staples | • Wallpaper Swatches |
| • Construction Paper | • Markers/Sharpies | • Stamp | • Watercolors |
| • Corks | • Metal Washers (all | • Pads/Stampers | • Wiggle Eyes |
| • Cotton Balls | • sizes) | | • Wrapping Paper |
| • Dice | • Marbles | | • Yarn/Ribbon/String |
| • Dominos | • Masking Tape | | |
| • Duct Tape | • Newspaper | | |

LOW RISK

(YES—Can send in these items)

All items below must be in their original unopened package.

- | | | | |
|-----------------------|--------------------|---------------------|---------------------|
| • Aluminum Foil | • Dixie Cups | • Plastic Bottles | • Popsicle Sticks – |
| • Aluminum Trays | • Envelopes | • Plastic Bowls | • All sizes |
| • Coffee Filters | • Foil Baking Tins | • Plastic Craft Egg | • Q-tips |
| • Coffee Stirrers | • Lunch Bags | • Containers | • Sponges |
| • Cotton Balls | • Paper Plates | • Plastic Forks, | • Straws |
| • Crystal Light | • Plastic Cups | • Spoons, Knives | • Tooth Picks |
| • Cylindrical Package | • Paper Cups | • Plastic Jars with | • Tupperware |
| • Container | • Pipe Cleaners | • Lids | • Ziploc bags |
| • Dental Floss | | | |



Inspiring Excellence

Upper Merion Area School District

435 Crossfield Road • King of Prussia, PA 19406 • 610-205-6400 • Fax 610-205-6433 • www.umasd.org

UMASD RECYCLED MATERIALS LIST

MEDIUM AND HIGH RISK NEW AND RECYCLED PRODUCTS

MEDIUM RISK

Check with your school about possible allergies

(MAYBE)

NO = If there is an allergy in the school AND the student will come into contact with the item

YES = If there isn't an allergy in the school

- Balloons (latex allergy)
- Clay (could contain wheat – check the ingredients list)
- Craft Glue (wheat allergy – Elmer's glue sticks are safe)
- Crayons (soy allergy)
- Egg Cartons (egg allergy)
- Play-Doh (wheat or gluten allergy)
- Rubber Bands (latex allergy)
- Tennis balls (latex allergy)
- Tennis Ball containers (come in contact with tennis balls – latex allergy)

HIGH RISK

(NO—Never send in these items)

- Cereal Boxes (number of allergy possibilities due to contact with food)
- Plastic and Cardboard food containers (e.g., waffle mix box, triscuits box)
- Pringles Containers (gluten allergy)
- Stuffed Animals (number of allergy possibilities)
- Used Food Cans (e.g., soup cans, chili cans, etc.) (number of allergy possibilities due to contact with food)
- Used Glass Food Containers (number of allergy possibilities due to contact with food)
- Used Nut Butter containers (e.g., peanut butter, almond butter, cashew butter, soy butter, nutella) (nut allergy)
- Used Plastic Storage Containers (all sizes) (possible contact with peanuts, tree nuts, eggs, and wheat)
- Used Tupperware (number of allergy possibilities due to contact with food)